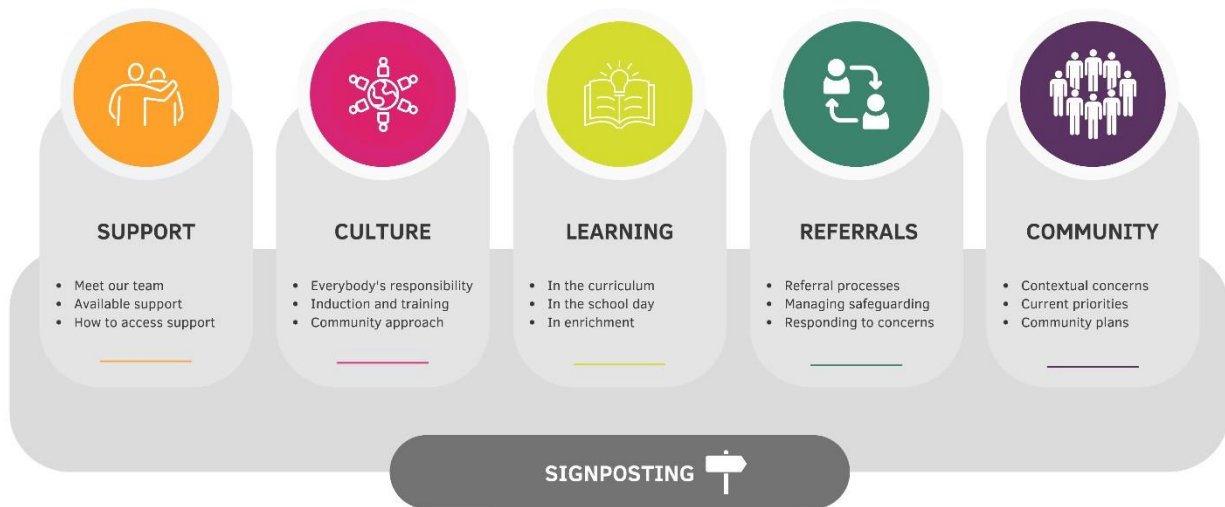


SAFEGUARDING at



Woodlands school
Part of the Marches Academy Trust



Introduction

Safeguarding is the action that is taken to promote the welfare of children and protect them from harm.

Safeguarding means:

- protecting children from abuse and maltreatment
- preventing harm to children's health or development
- ensuring children grow up with the provision of safe and effective care
- taking action to enable all children and young people to have the best outcomes.

At Woodlands we take safeguarding very seriously; the safety of our pupils is the most important priority. This document sits alongside our MMAT Safeguarding Policy and outlines our school specific Safeguarding processes and how we support our children and their families.



SUPPORT

- Meet our team
- Available support
- How to access support

Meet our team

 <p>Jules Taylor DSL Headteacher</p>	 <p>Schmize Badger DSL Senior Lead for Learner Welfare</p>	 <p>Chloe McInnis DSL Director of Safeguarding</p>	 <p>Alice Arnold DDSL Deputy Headteacher</p>	 <p>Simon Clay DDSL Senior Lead for Engagement</p>
 <p>Maddy Newman DDSL Assistant Headteacher, Primary</p>	 <p>Sarah McLaughlin DDSL Director of SEND</p>	 <p>Ben Cameron DDSL PE Teacher</p>	 <p>James Trigg DDSL Teacher</p>	
 <p>Hannah Shepherd DDSL LDAM</p>	 <p>Rachel Bates DDSL Director of Data & Communications</p>	 <p>Archie Longville DDSL Risk Reduction Mentor</p>	 <p>Hayley Wilson DDSL Director of Early Help</p>	

Designated Safeguarding Leads - At Woodlands we have a number of experienced Safeguarding Leads who act as the first point of contact for any safeguarding or child protection incidents or concerns. Due to the level of experience our safeguarding leads possess, it means that they are able to act promptly, accordingly, supporting pupils and families through any process initiated. Our safeguarding team meet weekly to make sure we are doing everything we can to safeguard our students, this can include making referrals to other services for support.

Our Learning for Life Team: At Woodlands we have a team that is dedicated to supporting pupils successfully access the curriculum, learning and social activities. This enables our learners regardless of their ability, gender, race or social standing to reach their full potential. We understand that some of our learners and families may need additional support to ensure that our children are able to do their best, achieve, stay safe and be happy both in school and at home.

Our pastoral and inclusion team are key to ensuring that the welfare of our learners is prioritised and are skilled facilitating purposeful and positive relationships between home and school.

How to access support

To access support or advice on a school level, about school related issues or to raise safeguarding concerns you can email the Head Teacher at Julia.taylor@wdl.mmat.co.uk our Senior Lead for Learner Welfare Schmize.badger@wdl.mmat.co.uk or Director of Safeguarding and at Chloe.Mcinnis@wdl.mmat.co.uk

Our out of hours safeguarding inbox at Safeguarding@wdl.mmat.co.uk

Learners:

- Learners can speak to any member of staff about a concern. Some learners might have a key worker who is assigned to check in regularly with them.
- Learners know who the safeguarding team are and reminded regularly that if they have a concern or worry, they can speak to anyone.
- All learners have a Holistic Learner Profile where 'My Team' has been identified. This consists of up to five trusted adults.

Staff must follow the MAT safeguarding policy.

- If you see or hear something of concern, you must report it.
- Staff record the concern on CPOMS and if a child is of imminent risk should inform a DSL straight away.
- All staff working with learners at Woodlands are a DBS and are logged on the Single Central Record.
- DSL will then respond to the concerns

Alternatively, you can call school on 01939 232372 and ask to speak to any school leader or DSL

If a child is at immediate risk outside of school, please call the police on 999.

If you have a concern about the safety of a child outside of school, you can contact First Point Of Contact on 0345 6789 044.

Woodlands Safeguarding Culture

We believe safeguarding is everyone's responsibility, staff, parents, pupils, community and visitors.



Safeguarding is everybody's responsibility and at Woodlands we understand that the learner is always at the centre of our work. All staff at Woodlands are committed to safeguarding our learners and promoting the welfare so they able to flourish. We encourage our learners to keep themselves and each other safe and if there is a concern that they can raise this with confidence.

No concern is too small, all information related to a safeguarding concern is important, no matter how small it may seem it might just be the jigsaw piece that completes the puzzle.

All Staff are required to complete mandatory training in respect of safeguarding and child protection. All staff are aware of appropriate policies and legislation which they commit to work alongside.

Safeguarding training is monitored and regularly updated, changes to safeguarding

guidance and legislation is regularly shared with the staff team

Designated safeguarding staff receive additional specialist training

The MAT audit our safeguarding systems and structures regularly ensuring we are offering the best care and keeping everyone safe. We also complete internal audits and checks.



Safeguarding is a key aspect of the MAT's Learning for Life Framework and WAVE guidance. This has several different levels. The Safeguarding assurance audits are safeguarding systems that ensures school is offering the best care and keeping everyone safe. The Vulnerable Students Review take place half termly and these offer support, guidance and challenge in child-centred discussions. The framework and guidance offer pathways and supports for learners, and it recommends steps to be taken to support a pupil to the best possible outcome. We also complete internal audits and checks. We complete Local Authority Safeguarding Audits regularly and adapt our practice and

procedures accordingly. The school has regular Inclusion meetings and Learner Progress meetings which internally use the Learning for Life and Wave guidance to discuss next steps



DSL's receive clinical supervision as a means of ensuring good practice whilst looking after our own wellbeing. The school buys in to SAS insurance which offers a well-being package which all staff have access to.

Learners

Safeguarding is at the heart of everything we do at Woodlands, our learners receive continual mentoring from the staff team.

Woodlands Learners are encouraged to talk openly with no judgement regarding concerns they may have about themselves or others.

Referrals for support from external agencies empower our students to face/ overcome threats to safeguarding

Families

Woodlands families are encouraged to talk openly with no judgement regarding concerns they may have about themselves or others.

Safeguarding staff can make referrals for support from external agencies empower our families to reduce possible safeguarding concerns.

Current safeguarding issues/ information is communicated to families via email, news letters, School website and social media

Recruitment, Induction and training

- When recruiting new staff, the recruitment process is underpinned by the Safer Recruitment requirements and training.
- All staff have accredited training (Safeguarding, Prevent, Online Safety, GDPR).
- We regularly attend current training to develop expertise of staff.
- Safeguarding is a key aspect of our induction package for new staff, volunteers and visitors.
- All staff complete an annual assessment based on the updates from KCSIE.
- Local safeguarding themes are discussed in staff briefing sessions as they arise, and staff arise.
- Updates from the local authority are shared.
- Online signing in iPad has a safeguarding reminder



LEARNING

- In the curriculum
- In the school day
- In enrichment

Safeguarding is embedded through all that we do at Woodlands, students receive learning about safeguarding through a number of processes including PSHE curriculum, assemblies, and curriculum enrichment days.

The school has a EDIB group led by a designated adult who is EDIB Ambassador

Woodlands staff receive specific training to ensure they are equipped to deliver learning to our most vulnerable students, this training includes Trauma informed practice, relational practice, attachment friendly approaches.

Upon arriving at school, Woodlands learners are warmly greeted by the staff team and welcomed into the school. Time is allocated for breakfast and student check-ins, providing an opportunity for students to engage with their trusted adults and share any concerns they may have. Our knowledgeable staff members are attuned to our learners' well-being and can readily identify moments when they might feel dysregulated. They actively encourage positive communication about worries. Additionally, due to the substantial number of Designated Safeguarding Leads (DSLs) at Woodlands, there is always someone available to discuss concerns with learners.

Enrichment activities, including reward trips and experiential learning, play a crucial role in reinforcing positive safeguarding behaviour. For instance, safe behaviour is actively encouraged during these activities. As part of our approach, every student receives an 'activity passport.' This passport is allocated to students who consistently demonstrate responsible and safe behaviour while participating in these enriching experiences.



REFERRALS

- Referral processes
- Managing safeguarding
- Responding to concerns

Woodlands Referral Process

Observation by a member of staff that causes a feeling of unease for example:

- Injury
- Evidence of lack of care
- Learner says something
- Change in behaviour
- Child exploitation/county lines/grooming
- Adult says something regarding a child



Is the observation/discussion suggesting the child's safety/wellbeing is being compromised or at risk



NO – Discuss the incident with the Learner's tutor and record the incident on CPOMS



Yes
Discuss the Vulnerable Learner Observation with a DSL



Are there a growing number of concerns? Is there a pattern?

Are you concerned?

No

Continue to monitor

YES - Upload the concern on CPOMS in as much detail as possible. Then report it to a Designated Safeguarding Lead (DSL). This should be done on the same day unless there are exceptional circumstances.

DSL's - Julia Taylor, Head Teacher

- Schmize Badger, Senior Lead for Learner Welfare
- Chloe McInnis, Director of Safeguarding

OR in exceptional circumstances, such as in an emergency or a genuine concern that appropriate action has not been taken, staff members can speak directly to FPOC. Contact the FPOC on 0345 678 9021 If out of hours: Emergency Duty Team on 0345 678 9040



DSLs discuss the details of the reported concerns and may gather further information including talking with families.

If the DSLs decide that the concerns meet the threshold, they will report it following the procedures outlined in Keeping Children Safe in Education to the First Point of Contact (FPOC). DSL's can gain support and guidance from the Trust DSL.

As a school, we also make other referrals outside of FPOC to other agencies such as:

- **School Nurse** • **We are With You** • **Exploitation Triage** • **BeeU** • **Mental Health Support Team** • **CLIMB**
- **Purple Leaf**

Community Approach



COMMUNITY

- Contextual concerns
- Current priorities
- Community plans

Due to being a school that supports learners with EHCPs all our learners are vulnerable. Woodlands has developed strong links with the local PCSO and town Council.










As Woodlands' Catchment is county wide our Learners and families come from a variety of communities.

We have excellent links with early help hubs and the detached youth service to support and promote our involvement with contextual safeguarding within in communities.

Current Priorities

Ensuring we provide a safe and consistent environment where all of our learners flourish is priority. We are mindful of the increasing cases of child exploitation within Shropshire and recognise many of our students have an increased vulnerability to exploitation due to their social, emotional and mental health needs. We are committed to safeguard our learners against exploitation and work closely with services such as the TREES (Together reducing and ending exploitation in Shropshire) CLIMB, WAVY (Shropshire recovery service) and the Branch project.

SIGNPOSTING 

**Child Exploitation
in Shropshire**



autism
west midlands

